



INFINITY^{her}

ENGINEERED FOR HER™

New Styles for 2026*

*Available Spring/Summer 2026.



EMMA Quilted Classic

For more details see page 7



ANNIE Peached Twill Mesh Back

For more details see page 9



COLBIE 5-Panel / 2-Toned

For more details see page 6



KATE Unstructured Peached Twill

For more details see page 8



SOPHIE Micro Perforated Athletic

For more details see page 10

New Colors

Find new colors
on page 11



ROSIE Foam Front Trucker

Find new colors
on page 15

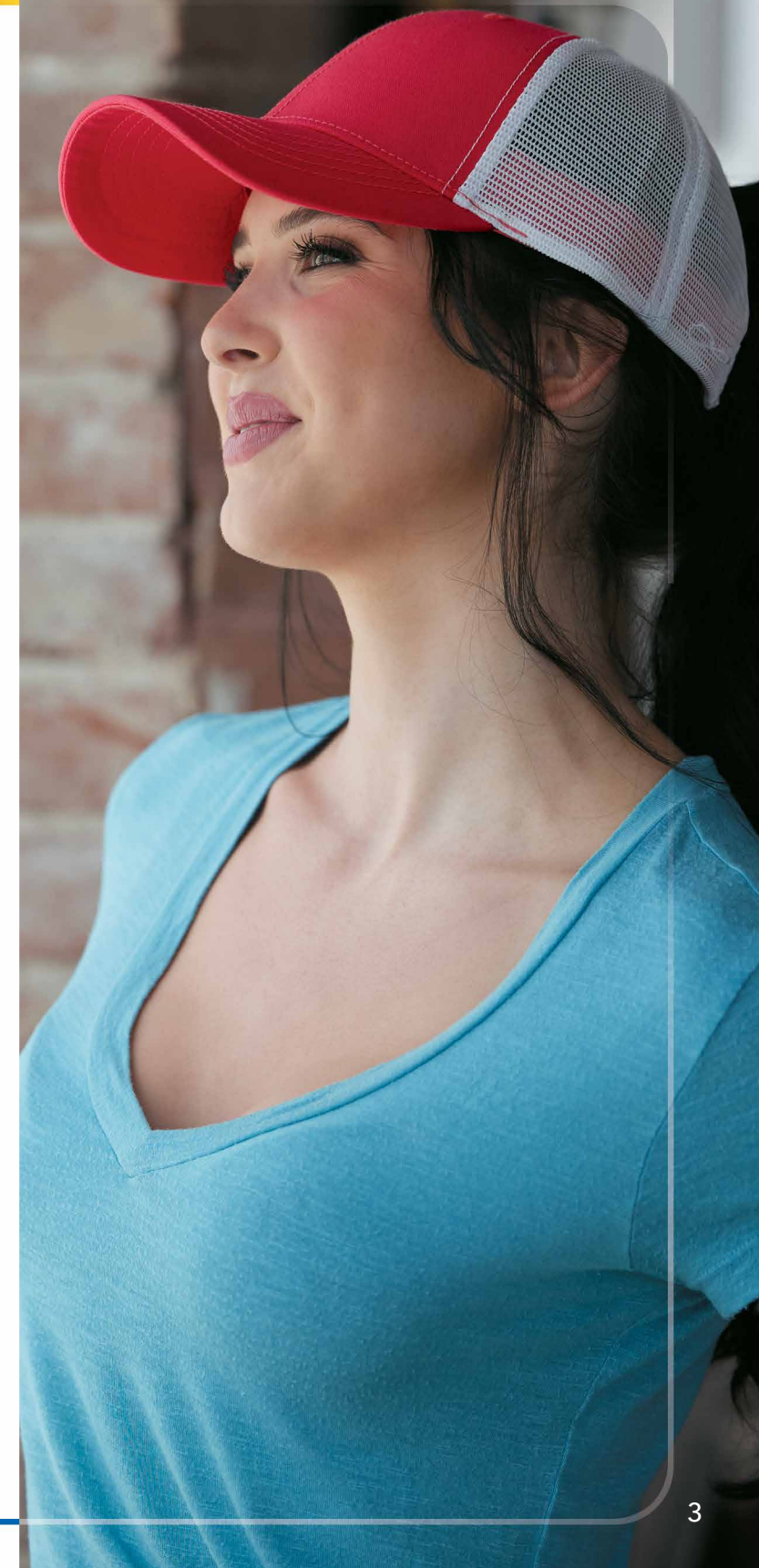


JANET Unstructured Printed Bill

Find new colors
on page 16-17



CHARLIE Structured Mesh Back



Why we've made a cap just for women

Women are over **half** the population and love baseball caps too. It's time they had one engineered especially for them.

- Perfectly sized for a woman's head
- Easy, snag-free closures
- Smaller, lightweight bills
- Beautiful trend-right colors and patterns

OUR PATENTED* FEATURES:

Makeup Resistant Sweatband

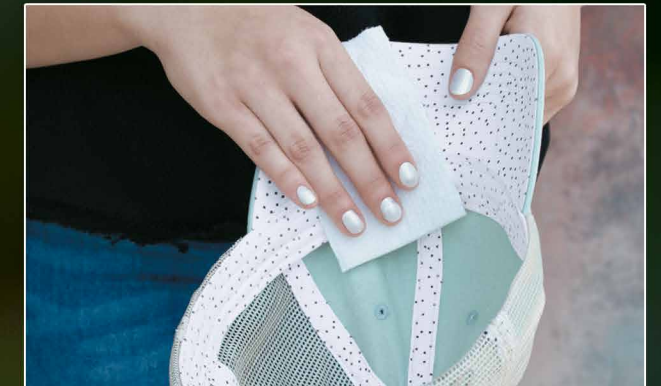
Elude®

MAKEUP RESISTANT SWEATBAND
is revolutionary for women's headwear.

Elude® solves the problem that most women face with wearing a cap - their makeup staining the sweatband. With this sweatband, the makeup wipes right off so that the sweatband isn't left with a permanent stain.

Lab Tested and Approved:

1. Stain Resistance
2. Breathability
3. Wicking



Concealed Ponytail

Evolve®

The hidden ponytail design was created to offer the option of a ponytail opening for a secure high ponytail or to look like a regular cap when hair isn't worn up.

There is no unsightly gap or awkward opening when the hair is worn down - her favorite cap can be worn either way.



* Patents: #US-2023-0035442-A1, #US-2023-0031337-A1 & 12,048,345

COLBIE

NEW

5-Panel / 2-Toned



Ponytail
Open



Ivory/Wine/
Leopard
Camo

- 100% Heavy Cotton Twill
- Structured, Five-Panel, High Profile
- Contrasting Pre-Curved Bill with Patterned Underbill
- Elude® Makeup Resistant, Breathable and Wicking Sweatband
- Evolve® Concealed Ponytail Opening
- Snapback Closure
- Tonal Infinity Her™ Embroidered Logo on Back Left Side



Ivory/Black/Leopard Camo



Ivory/Icy Blue/Leopard Camo



Ivory/Peony/Leopard Camo



Ivory/Red/Leopard Camo



Ivory/Sea Turtle/Leopard Camo



Ivory/Wine/Leopard Camo



Black/Black



Lilac/Lilac



Mauve/Mauve



Sage/Sage



Vanilla/Vanilla

NEW

EMMA

Quilted Classic



Ponytail
Open



Sage/
Sage

- 100% Polyester Quilted Front Panels
- 100% Polyester Soft Mesh Back Panels
- Structured, Six-Panel, Mid Profile
- Pre-Curved Bill with Matching Underbill
- Elude® Makeup Resistant, Breathable and Wicking Sweatband
- Evolve® Concealed Ponytail Opening
- Silver Tri-Glide Closure
- Tonal Infinity Her™ Embroidered Logo on Back Left Side

KATE

NEW

Unstructured Peached Twill



Cherry Blossom

- 100% Peached Washed Cotton Twill
- Unstructured, Six-Panel, Low Profile
- Pre-Curved Bill with Matching Underbill
- Elude® Makeup Resistant, Breathable and Wicking Sweatband
- Evolve® Concealed Ponytail Opening
- Silver Tri-Glide with Metal Grommet Closure
- Tonal Infinity Her™ Embroidered Logo on Back Left Side



Berry



Black



Cherry Blossom



Latte



Sapphire



Sea Turtle



White

Leopard Camo

Pinstripe



Berry/White



Black/White



Cherry Blossom/White



Latte/White



Sapphire/White



Sea Turtle/White



White/White

Slate/White

Leopard Camo/Brown

Pinstripe/Black

NEW

ANNIE

Peached Twill Mesh Back



Slate/White

- 100% Peached Washed Cotton Twill Front Panels
- 100% Polyester Soft Mesh Back Panels
- Unstructured, Six-Panel, Low Profile
- Pre-Curved Bill with Matching Underbill
- Elude® Makeup Resistant, Breathable and Wicking Sweatband
- Evolve® Concealed Ponytail Opening
- Silver Tri-Glide Closure
- Tonal Infinity Her™ Embroidered Logo on Back Left Side

SOPHIE

NEW
Micro Perforated Athletic



- 100% Moisture Wicking Polyester
- Micro Geometric Perforated Side and Back Panels
- Lightly Structured, Six-Panel, Low Profile
- Pre-Curved Bill with Patterned Underbill and Sweatband
- Elude® Makeup Resistant, Breathable and Wicking Sweatband
- Evolve® Concealed Ponytail Opening
- D-Ring with Micro Hook/Loop Closure
- Tonal Infinity Her™ Embroidered Logo on Back Left Side



ROSIE

Foam Front Trucker



- 100% Polyester Foam Front Panels
- 100% Polyester Mesh Back Panels
- Structured, Five-Panel, High Profile
- Slight Pre-Curved Bill with Patterned Underbill and Sweatband
- Elude® Makeup Resistant, Breathable and Wicking Sweatband
- Evolve® Concealed Ponytail Opening
- Snapback Closure
- Infinity Her™ Embroidered Logo on Back Left Side

CHARLIE

BEST-SELLER

Structured Mesh Back



- 100% Cotton Micro Canvas Front Panels
- 100% Polyester Mesh Back Panels
- Structured, Six-Panel, Mid Profile
- Pre-Curved Bill with Matching Underbill
- Elude® Makeup Resistant, Breathable and Wicking Sweatband
- Evolve® Concealed Ponytail Opening
- Snapback Closure
- Infinity Her™ Embroidered Logo on Back Left Side



MAYA

5-Panel with Rope



Pink Sorbet/
Floral

- 100% Brushed Cotton Twill
- Lightly Structured, Five-Panel, Low Profile
- Pre-Curved Bill with Patterned Underbill, Seam Tape and Sweatband and Tonal Rope
- Elude® Makeup Resistant, Breathable and Wicking Sweatband
- Evolve® Concealed Ponytail Opening
- Snapback Closure
- Infinity Her™ Embroidered Logo on Back Left Side



Black/Black Leopard

Chocolate/Fawn

Pink Sorbet/Floral

Vanilla/Longhorn

Violet/Snow Leopard



JO

Corduroy Mesh Back



Black/Black Leopard/Black

Chocolate/Fawn/Chocolate

Pink Sorbet/Floral/Pink Sorbet

Vanilla/Longhorn/Vanilla



Thin Wale Corduroy

Vanilla/
Longhorn/
Vanilla

- 100% Cotton Thin Wale Corduroy Front Panels
- 100% Polyester Mesh Back Panels
- Lightly Structured, Six-Panel, Low Profile
- Pre-Curved Bill with Tonal Pattern Underbill, Seam Tape and Sweatband
- Elude® Makeup Resistant, Breathable and Wicking Sweatband
- Evolve® Concealed Ponytail Opening
- Snapback Closure
- Infinity Her™ Embroidered Logo on Back Left Side



HATTIE

Unstructured Prints



Floral Camo

- 100% Cotton, Pigment-Washed Twill
- Unstructured, Six-Panel, Low Profile
- Pre-Curved Bill
- Elude® Makeup Resistant, Breathable and Wicking Sweatband
- Evolve® Concealed Ponytail Opening
- Antique Brass Tri-Glide Closure
- Infinity Her™ Embroidered Logo on Back Left Side

Please allow for color variations in production due to the pigment wash process for this cap



Black Leopard



Dark Navy Floral



Floral Camo



Navy w/ White Stars



Red w/ White Stars



Snow Leopard



Black/Black/Black Leopard



Black/Khaki/Leopard



Black/White/Cow



Chocolate/Vanilla/Longhorn



JANET

Unstructured Printed Bills



Black/Black/Black Leopard

- 100% Cotton Pigment Washed Twill Front Panels
- 100% Polyester Washed Soft Mesh Back Panels
- Unstructured, Six-Panel, Low Profile
- Pre-Curved Contrasting Patterned Bill, Sweatband and Closure
- Elude® Makeup Resistant, Breathable and Wicking Sweatband
- Evolve® Concealed Ponytail Opening
- Antique Brass Tri-Glide Closure
- Infinity Her™ Embroidered Logo on Back Left Side

Please allow for color variations in production due to the pigment wash process for this cap

CASSIE

Unstructured Twill



Ponytail
Open



Violet/
Floral



- 100% Cotton, Pigment-Washed Twill
- Unstructured, Six-Panel, Low Profile
- Pre-Curved Bill, Contrasting Pattern Underbill, Sweatband and Seam Tape
- Elude® Makeup Resistant, Breathable and Wicking Sweatband
- Evolve® Concealed Ponytail Opening
- Antique Brass Tri-Glide Closure
- Infinity Her™ Embroidered Logo on Back Left Side

Please allow for color variations in production due to the pigment wash process for this cap



Black/Leopard



Cashmere Blue/Floral



Jade/Daisy



Rose/Polka Dots



Sage/Polka Dots



Vanilla/Lognhorn



Violet/Floral

White/Floral



Black/Leopard/Khaki



Cashmere Blue/Floral/Khaki



Chocolate/Fawn/Khaki



Dusty Pink/Floral/Khaki



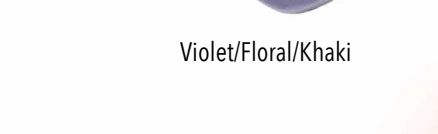
Olive/Camo/Khaki



Rose/Polka Dots/Khaki



Sage/Polka Dots/Khaki



Vanilla/Lognhorn/Khaki

Violet/Floral/Khaki

TESS

Unstructured Mesh Back



Ponytail
Open



Cashmere
Blue/Floral/
Khaki



- 100% Cotton, Pigment-Washed Twill Front Panels
- 100% Polyester Washed Soft Mesh Back Panels
- Unstructured, Six-Panel, Low Profile
- Pre-Curved Bill, Contrasting Pattern Underbill, Sweatband and Seam Tape
- Elude® Makeup Resistant, Breathable and Wicking Sweatband
- Evolve® Concealed Ponytail Opening
- Snapback Closure
- Infinity Her™ Embroidered Logo on Back Left Side

Please allow for color variations in production due to the pigment wash process for this cap

Where to Buy

We've partnered with Sportsman Cap & Bag and their 20 Distributors to bring the Infinity Her™ line to you.

Sportsman Cap & Bag Support Team
913-541-0901 • info@headwear.com

1.

S&S Activewear

Reno, Nevada 89506
800 523 2155 toll free
www.ssactivewear.com
asi# 84358

2.

Mission Imprintables

San Diego, California 92154
800 480 0800 toll free
www.missionimprintables.com
asi# 71781

3.

S&S Activewear

Fresno, California 93725
800 523 2155 toll free
www.ssactivewear.com
asi# 84358

4.

McCreary's Tees

Phoenix, Arizona 85040
800 541 1141 toll free
www.mccrearystees.com
asi# 69885

5.

SLC Activewear

West Valley City, Utah 84119
888 557 0799 toll free
www.slactivewear.com

6.

S&S Activewear

Fort Worth, Texas 76137
800 523 2155 toll free
www.ssactivewear.com
asi# 84358

7.

S&S Activewear

Irving, Texas 75261
800 523 2155 toll free
www.ssactivewear.com
asi# 84358

8.

Kati Sportcap & Bag

Houston, Texas 77063
800 392 5559 toll free
www.katisportcap.com
asi# 64140

9.

S&S Activewear

Olathe, Kansas 66061
800 523 2155 toll free
www.ssactivewear.com
asi# 84358

10.

S&S Activewear

Lockport, Illinois 60441
800 523 2155 toll free
www.ssactivewear.com
asi# 84358

11.

S&S Activewear

Bolingbrook, Illinois 60490
888 523 2155 toll free
www.ssactivewear.com
asi# 84358

12.

S&S Activewear

West Chester Township, Ohio 45011
800 523 2155 toll free
www.ssactivewear.com
asi# 84358

13.

S&S Activewear

McDonough, Georgia 30253
800 523 2155 toll free
www.ssactivewear.com
asi# 84358

14.

S&S Activewear

Duluth, Georgia 30096
800 523 2155 toll free
www.ssactivewear.com
asi# 84358

15.

Carolina Made

Indian Trail, North Carolina 28079
800 222 1409 toll free
www.carolinamade.com
asi# 43993

16.

S&S Activewear

Orlando, Florida 32824
800 523 2155 toll free
www.ssactivewear.com
asi# 84358

17.

S&S Activewear

Reading, Pennsylvania 19605
800 523 2155 toll free
www.ssactivewear.com
asi# 84358

18.

S&S Activewear

Lewisberry, Pennsylvania 17339
800 523 2155 toll free
www.ssactivewear.com
asi# 84358

19.

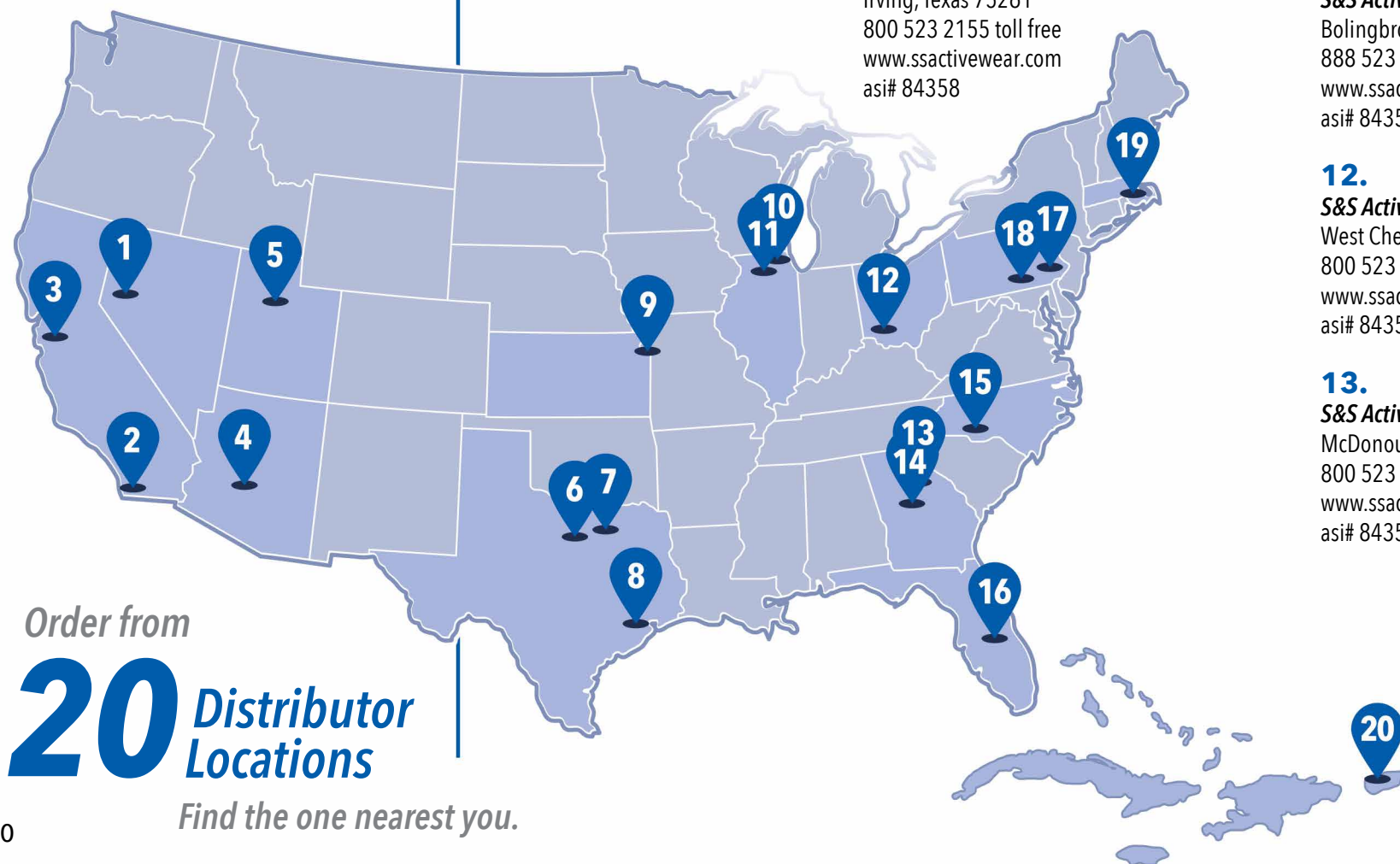
S&S Activewear

Middleborough, Massachusetts 02346
800 523 2155 toll free
www.ssactivewear.com
asi# 84358

20.

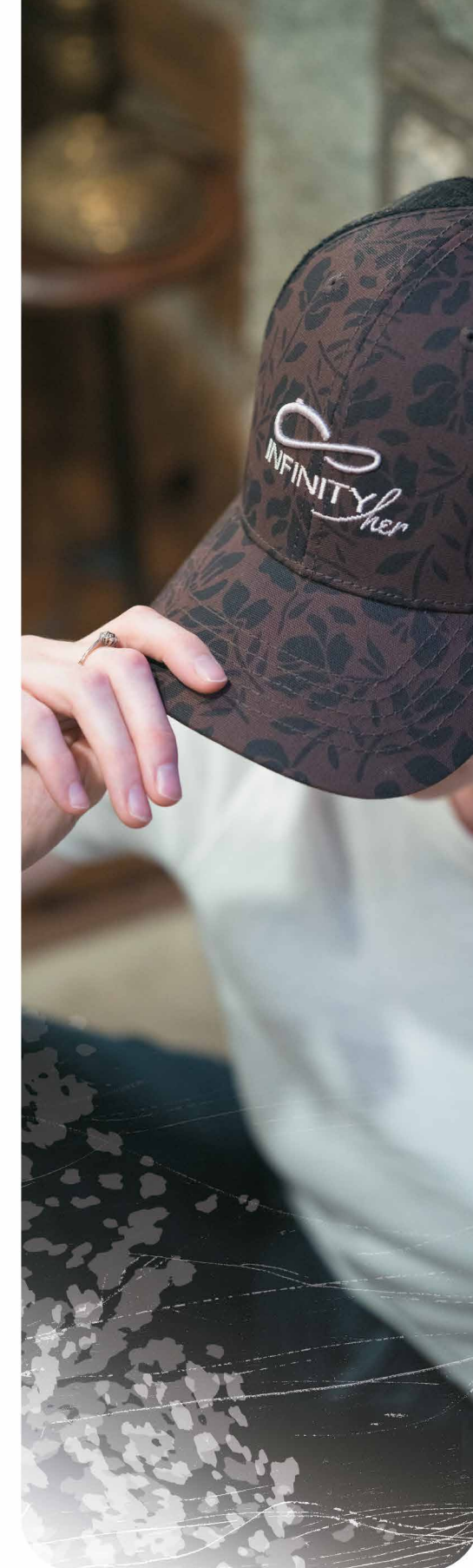
S&S Puerto Rico

Catano, PR 00962
1 787 275 3600 toll free
en-pr.ssactivewear.com



Order from
20 Distributor
Locations

Find the one nearest you.





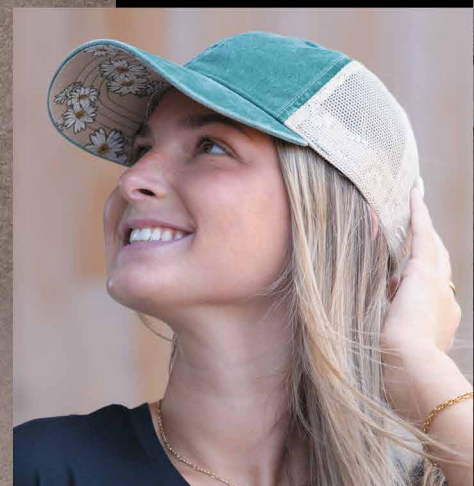
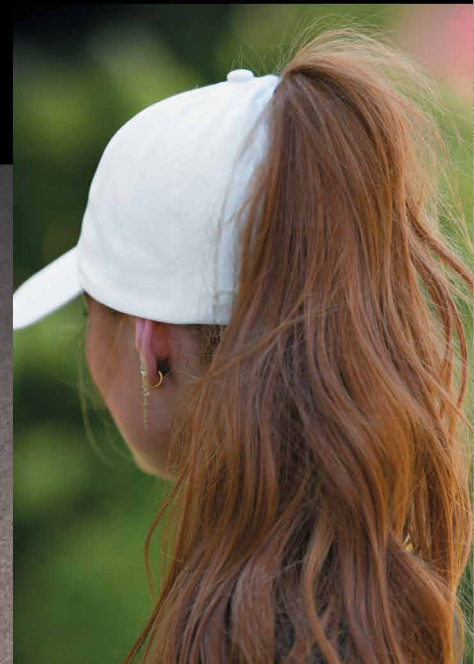
A LITTLE ABOUT US

Infinity Her™ is a division of Infinity Product Group. We've been designing beautiful and trend-right headwear since 1997. We've sold over 50 million ladies caps since realizing women love baseball caps too!



We want to make the world a better place for the women we design for. Infinity Product Group has supported hospitals across the country, academic programs, disaster relief, and the Breast Cancer Awareness Mission as well as partnering with local non-profit charities Beautiful Lives and Samaritan House, whose missions are to support women and families in the community.





infinityforher.com
infinityher@infinitypg.com
415 North Bloomington St
Lowell, AR 72745

