



INFINITY *her*

ENGINEERED FOR HER™

2025 Collection

New For 2025

Staying on top of industry trends is **key** to maintaining a **competitive edge**.

NEW STYLES

MAYA 5 Panel with Rope For more details see page 4



JO Corduroy Mesh Back For more details see page 5



CHARLIE Structured Mesh Back For more details see page 8



CASSIE Unstructured Twill For more details see page 10



TESS Unstructured Mesh Back For more details see page 11



NEW COLORWAYS

Why we've made a cap just for women

Women are over **half** the population and love baseball caps too. It's time they had one engineered especially for them.

Evolve

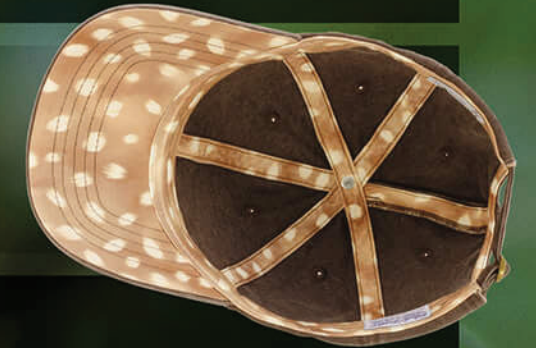
Patented* concealable ponytail opening



Beautiful trend-right colors and patterns

Elude

Patented* makeup resistant, wicking and breathable sweatband



- Perfectly sized for a woman's head
- Easy, snag-free closures
- Smaller, lightweight visors

* Patent US 11,805,834 & 11,786,001 B2

MAYA

NEW

5 Panel with Rope



Pink/
Floral

- 100% Brushed Cotton Twill
- Lightly Structured, Five-Panel, Low Profile
- Pre-Curved Visor with Patterned Undervisor, Seam Tape and Sweatband and Tonal Rope
- Elude® Makeup Resistant, Breathable and Wicking Sweatband
- Evolve® Concealed Ponytail Opening
- Plastic Snap Closure
- Infinity Her™ Embroidered Logo on Back Left Side



Black/Black Leopard

Chocolate/Fawn



Pink/Floral

Vanilla/Longhorn



Violet/Snow Leopard



Black/Black Leopard/Black

Chocolate/Fawn/Chocolate



Pink Sorbet/Floral/Pink Sorbet

Vanilla/Longhorn/Vanilla



NEW

JO

Corduroy Mesh Back



Thin Wale Corduroy

Vanilla/
Longhorn/
Vanilla

- 100% Cotton Thin Wale Corduroy Front Panels
- 100% Polyester Mesh Back Panels
- Lightly Structured, Six-Panel, Low Profile
- Pre-Curved Visor with Contrasting Pattern Undervisor, Seam Tape and Sweatband
- Elude® Makeup Resistant, Breathable and Wicking Sweatband
- Evolve® Concealed Ponytail Opening
- Plastic Snap Closure
- Infinity Her™ Embroidered Logo on Back Left Side

GABY

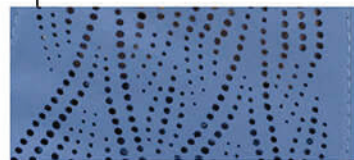
Perforated Performance



Ponytail Open



Periwinkle/Floral



Perforated back

- 97% Polyester/3% Spandex
- Unstructured, Six-Panel, Low Profile
- Slight Pre-Curved Visor with Patterned Undervisor and Sweatband
- Perforated Side and Back Panels
- Elude® Makeup Resistant, Breathable and Wicking Sweatband
- Evolve® Concealed Ponytail Opening
- Slotted Plastic Snap Closure
- Infinity Her™ Embroidered Logo on back left



Black/Swirl



Dusty Pink/Floral



Lt Grey/Grey Leopard



Periwinkle/Floral



White/Floral



Slate/Black/Cow



Dusty Pink/Peachy Pink/Butterfly



Ivory/Jade/Swirl



Ivory/Lavender/Smiley



Ivory/Sherbert/Floral



Lt. Blue/Navy/Graffiti



ROSIE

Foam Front Trucker



Ponytail Open



Slate/Black/Cow

- 100% Polyester Foam Front Panels
- 100% Polyester Mesh Back Panels
- Structured, Five-Panel, High Profile
- Slight Pre-Curved Visor with Patterned Undervisor and Sweatband
- Elude® Makeup Resistant, Breathable and Wicking Sweatband
- Evolve® Concealed Ponytail Opening
- Plastic Snap Closure
- Infinity Her™ Embroidered Logo on back left

CHARLIE

Structured Mesh Back



- 100% Cotton Micro Canvas Front Panels
- 100% Polyester Mesh Back Panels
- Structured, Six-Panel, Mid Profile
- Pre-Curved Visor with Matching Undervisor
- Elude® Makeup Resistant, Breathable and Wicking Sweatband
- Evolve® Concealed Ponytail Opening
- Plastic Snap Closure
- Infinity Her™ Embroidered Logo on Back Left Side



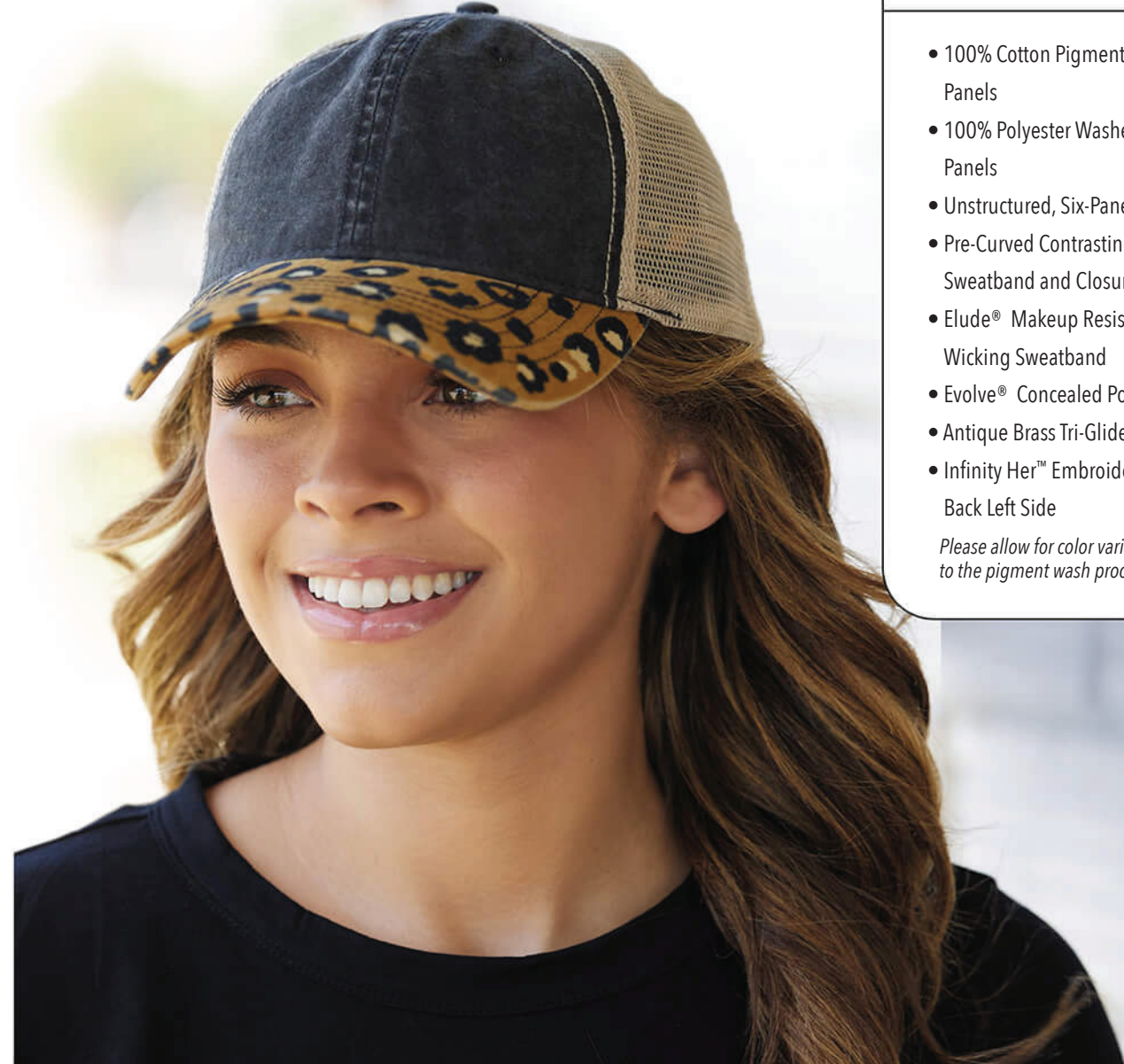
JANET

Unstructured Printed Visors



- 100% Cotton Pigment Washed Twill Front Panels
- 100% Polyester Washed Soft Mesh Back Panels
- Unstructured, Six-Panel, Low Profile
- Pre-Curved Contrasting Patterned Visor, Sweatband and Closure
- Elude® Makeup Resistant, Breathable and Wicking Sweatband
- Evolve® Concealed Ponytail Opening
- Antique Brass Tri-Glide Closure
- Infinity Her™ Embroidered Logo on Back Left Side

Please allow for color variations in production due to the pigment wash process for this cap



CASSIE

Unstructured Twill



Black/Leopard

Cashmere Blue/Floral

Chocolate/Fawn



Dusty Pink/Floral

Jade/Daisy

Lavender/Stripes



Lt. Grey/Polka Dots

Navy/Stripes

Red/Leopard



Rose/Polka Dots

Sage/Polka Dots

Vanilla/Longhorn



Violet/Floral

White/Floral



Black/Leopard/Khaki

Cashmere Blue/Floral/Khaki

Chocolate/Fawn/Khaki



Dusty Pink/Floral/Khaki

Jade/Daisy/Khaki

Lavender/Stripes/Khaki



Lt. Grey/Polka Dots/Khaki

Olive/Camo/Khaki

Red/Leopard/Khaki



Rose/Polka Dots/Khaki

Sage/Polka Dots/Khaki

Sherbert/Stripes/Khaki



Vanilla/Longhorn/Khaki

Violet/Floral/Khaki

TESS

Unstructured Mesh Back



Ponytail Open



Cashmere Blue/Floral/Khaki

- 100% Cotton, Pigment-Washed Twill Front Panels

- 100% Polyester Washed Soft Mesh Back Panels

- Unstructured, Six-Panel, Low Profile

- Pre-Curved Visor, Contrasting Pattern Undervisor, Sweatband and Seam Tape

- Elude® Makeup Resistant, Breathable and Wicking Sweatband

- Evolve® Concealed Ponytail Opening

- Plastic Snap Closure

- Infinity Her™ Embroidered Logo on Back Left Side

Please allow for color variations in production due to the pigment wash process for this cap



Ponytail Open

Red/Leopard

- 100% Cotton, Pigment-Washed Twill

- Unstructured, Six-Panel, Low Profile

- Pre-Curved Visor, Contrasting Pattern Undervisor, Sweatband and Seam Tape

- Elude® Makeup Resistant, Breathable and Wicking Sweatband

- Evolve® Concealed Ponytail Opening

- Antique Brass Tri-Glide Closure

- Infinity Her™ Embroidered Logo on Back Left Side

Please allow for color variations in production due to the pigment wash process for this cap



HATTIE

Unstructured Prints



Ponytail Open

Floral Camo

- 100% Cotton, Pigment-Washed Twill
- Unstructured, Six-Panel, Low Profile
- Pre-Curved Visor
- Elude® Makeup Resistant, Breathable and Wicking Sweatband
- Evolve® Concealed Ponytail Opening
- Antique Brass Tri-Glide Closure
- Infinity Her™ Embroidered Logo on Back Left Side

Please allow for color variations in production due to the pigment wash process for this cap



Black Leopard

Dark Navy Floral

Floral Camo

Leopard Print

Lt Pink Pastel Floral

Navy w/ White Stars

Red w/ White Stars

Snow Leopard

Tie Dye - Slate Blue

OUR Patented Features

Elude® Our Patented* Makeup Resistant Sweatband

& Evolve® Our Patented* Concealed Ponytail



Our patented* **MAKEUP RESISTANT SWEATBAND** is revolutionary for women's headwear.

Elude® solves the problem that most women face with wearing a cap - their makeup staining the sweatband. With this sweatband, the makeup wipes right off so that the sweatband isn't left with a permanent stain.

Lab Tested and Approved:

1. Stain Resistance
2. Breathability
3. Wicking



The hidden ponytail design was created to offer the option of a ponytail opening for a secure high ponytail or to look like a regular cap when hair isn't worn up.

There is no unsightly gap or awkward opening when the hair is worn down - her favorite cap can be worn either way.

* Patent US 11,805,834 & 11,786,001 B2

Where to Buy

We've partnered with Sportsman Cap & Bag and their 17 Distributors to bring the Infinity Her line to you.



Indian Trail, North Carolina
800-222-1409 toll free
www.carolinamade.com
asi# 43993



Houston, Texas
800-392-5559 toll free
www.katisportcap.com
asi# 64140



Phoenix, Arizona
800-541-1141 toll free
www.mccrearystees.com
asi# 69885



San Diego, California
800-480-0800 toll free
www.missionimprintables.com
asi# 71781



West Valley City, Utah
888-557-0799 toll free
www.slactivewear.com



Fort Worth, Texas
800-523-2155 toll free
www.ssactivewear.com
asi# 84358

Lockport, Illinois
800-523-2155 toll free
www.ssactivewear.com
asi# 84358

McDonough, Georgia
800-523-2155 toll free
www.ssactivewear.com
asi# 84358

Olathe, Kansas
800-523-2155 toll free
www.ssactivewear.com
asi# 84358

Pompano Beach, Florida
800-523-2155 toll free
www.ssactivewear.com
asi# 84358

Reading, Pennsylvania
800-523-2155 toll free
www.ssactivewear.com
asi# 84358

Reno, Nevada
800-523-2155 toll free
www.ssactivewear.com
asi# 84358

West Chester Township, Ohio
800-523-2155 toll free
www.ssactivewear.com
asi# 84358



Burnaby, British Columbia
800-771-1600 toll free
en-ca.ssactivewear.com
asi# 90703

Calgary, Alberta
800-771-1600 toll free
en-ca.ssactivewear.com
asi# 90703

Woodbridge, Ontario
800-771-1600 toll free
en-ca.ssactivewear.com
asi# 90703



Catano, Puerto Rico
787-275-3600 toll free
en-pr.ssactivewear.com
asi# 84358

Sportsman Cap & Bag Support Team
913-541-0901
info@headwear.com



A LITTLE ABOUT US

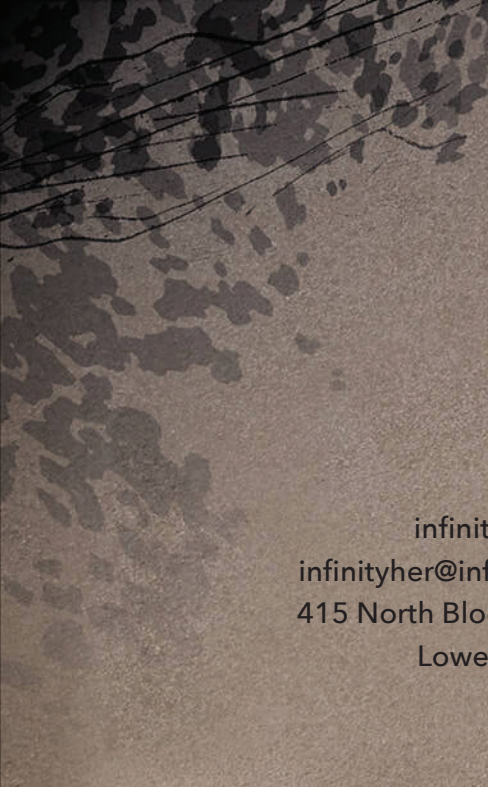
Infinity Her™ is a division of Infinity Product Group. We've been designing beautiful and trend-right headwear since 1997. We've sold over 50 million ladies caps since realizing women love baseball caps too!



INFINITY
GIVING

We want to make the world a better place for the women we design for. Infinity Product Group has supported hospitals across the country, academic programs, disaster relief, and the Breast Cancer Awareness Mission as well as partnering with local non-profit charities Beautiful Lives and Samaritan House, whose missions are to support women and families in the community.





infinityforher.com
infinityher@infinitypg.com
415 North Bloomington St
Lowell, AR 72745

